

# GLOBE at Night

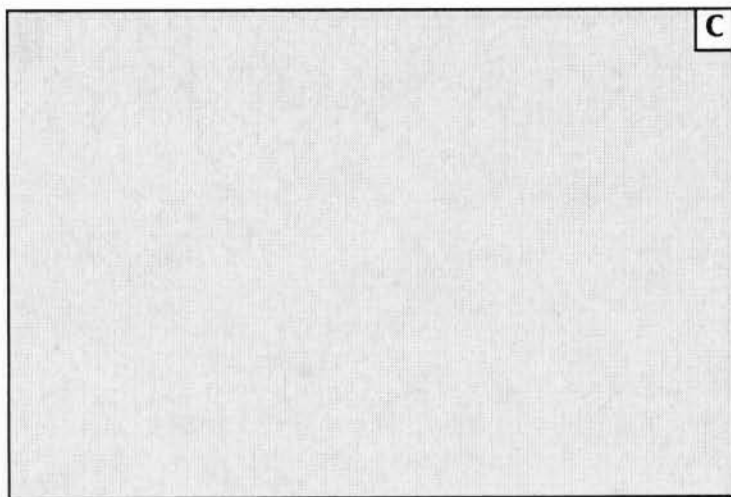


## Teacher Activity Packet: Magnitude Charts

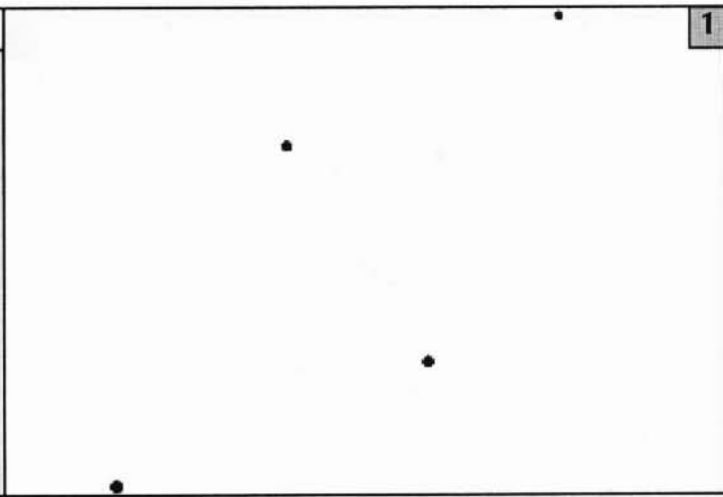
[www.globe.gov/globeatnight](http://www.globe.gov/globeatnight)

The following charts were generated with celestial North straight up.  
Please orient this page according to your location.

↑ Northern Hemisphere View ↑

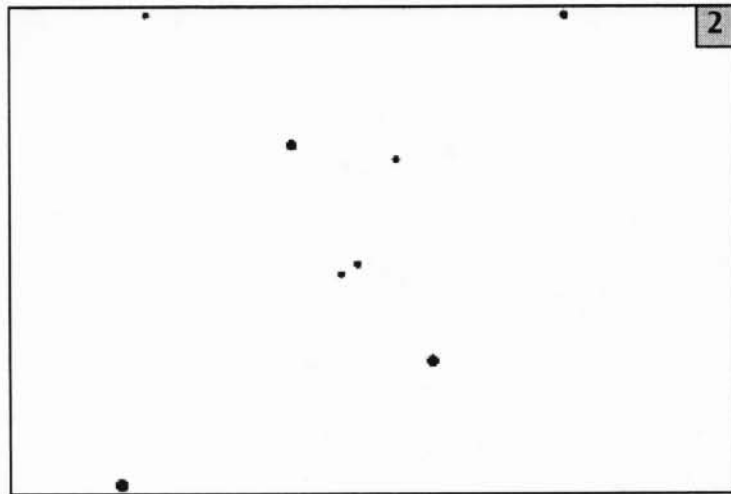


Hint: You can't see Orion because he is hidden behind clouds.

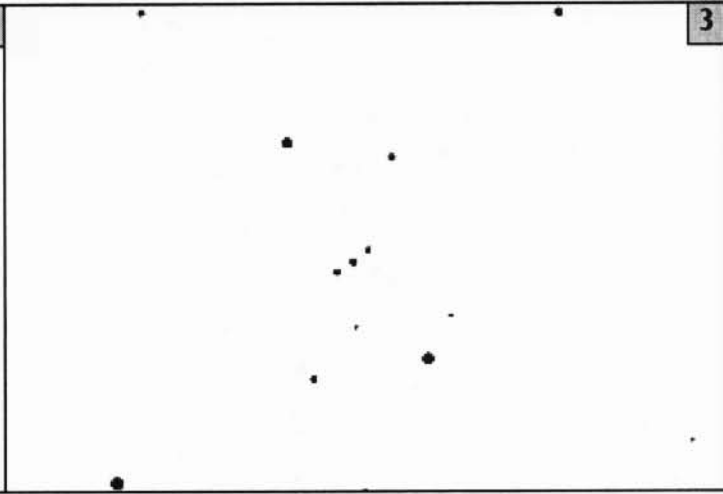


Hint: You can only see a couple of the brightest stars in Orion.

Near Equator View ↑



Hint: You can see two stars in Orion's belt.



Hint: You can see three stars in Orion's belt.

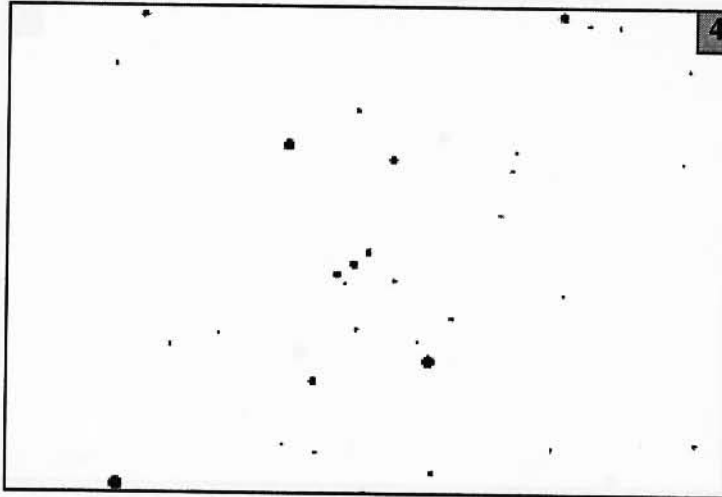
↙ Southern Hemisphere View ↙

## Teacher Activity Packet: Magnitude Charts

[www.globe.gov/globenight](http://www.globe.gov/globenight)

The following charts were generated with celestial North straight up. Please orient this page according to your location.

↑ Northern Hemisphere View ↑

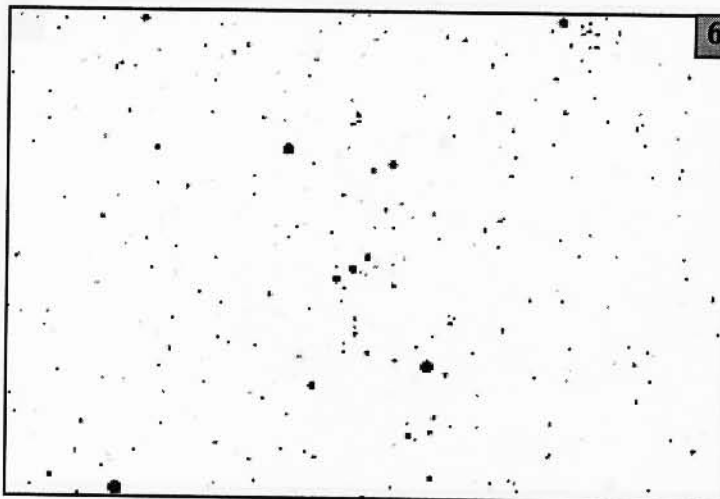


Hint: You can see four stars in Orion's belt.

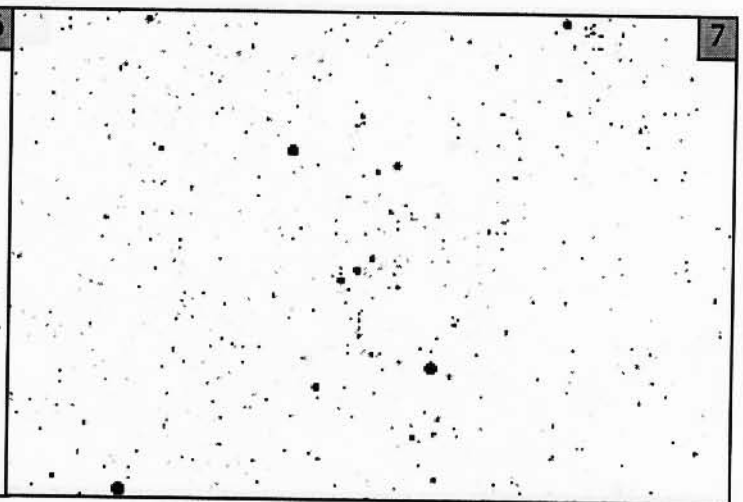


Hint: You can see six stars in Orion's belt, and also you might be able to see his sword.

Near Equator  
View ↑



Hint: You can see many stars in Orion's belt, and his sword is clearly visible.



Hint: You can't count that many stars!

↙ Southern Hemisphere View ↘